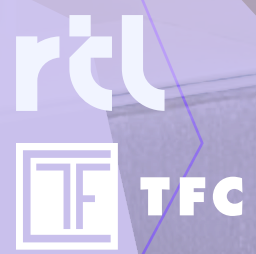


RETAIL 7 EAST
14TH STREET

pressed



825 SF RETAIL SPACE OPPORTUNITY

RETAIL 7 EAST 14TH STREET

Union Square | New York, NY 10003

Property Spec

Ground Floor
825 SF

Frontage
15 FT

Possession

November 2026

Comments

- At the base of The Victoria, 496 residential units
- 2 min walk to the 14th St Union Square subway station
- All uses considered, except cooking uses

Neighbors

Westerly Market [coming soon], Whole Foods, Vans
Trader Joe's, Best Buy, Staples, Barnes & Nobles,
Nordstrom Rack, DSW, Petco, AT&T



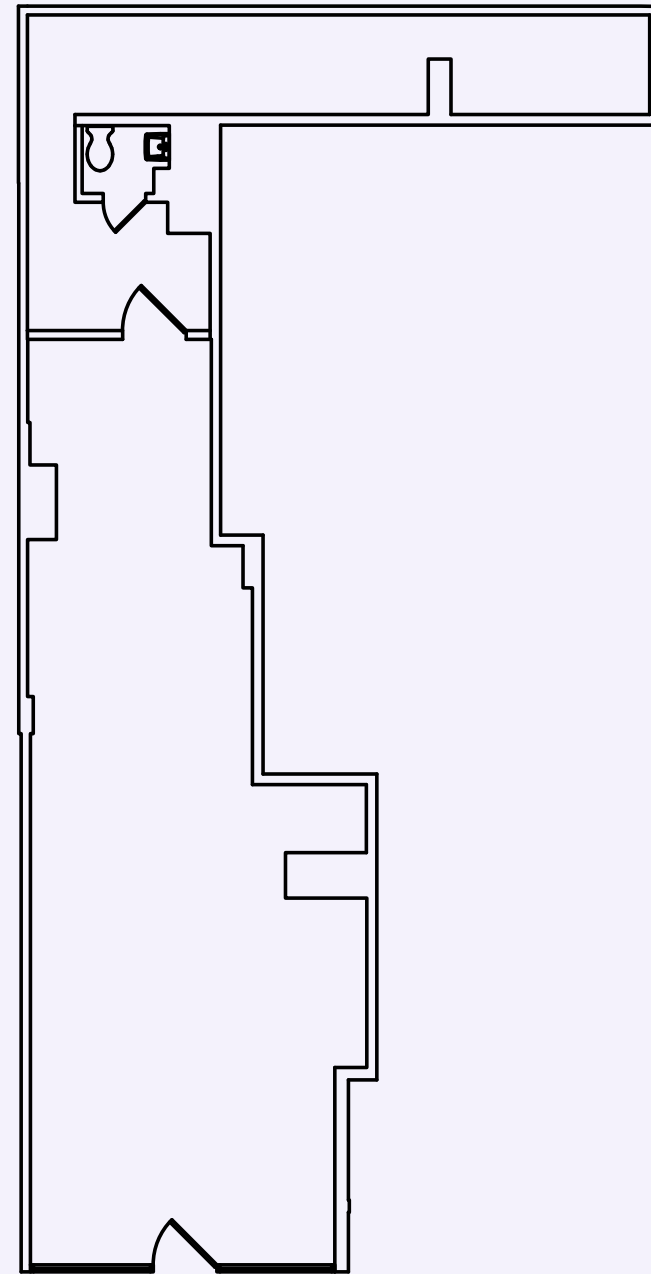
LOCATED AT THE HEART OF
UNION SQUARE **PARK**

138 MILLION
VISITORS PER YEAR

Ground Floorplan

Ground Floor
825 SF

Frontage
15 FT



15 FT

East 14th Street

DEMOGRAPHIC DATA

WITHIN A 5 MINUTE WALK

RESIDENTIAL



\$209,504
Median Income



16,359
Total Population



33
Median Age



1.72
Avg. Household Size



10,000+
Residential Units

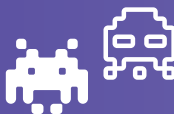
CONSUMER SPENDING



\$578,872,877
Retail Spending



\$229,989,079
Food



\$77,108,839
Entertainment



\$5 1,154,388
Apparel & Services

OFFICE/RETAIL



27,793
Total Employees



2,196
Total Businesses



91.4%
White Collar Workers

RETAIL

ALTHOUGH ALL INFORMATION REGARDING PROPERTY FOR SALE, RENTAL OR FINANCING IS FROM SOURCES DEEMED RELIABLE, SUCH INFORMATION HAS NOT BEEN VERIFIED, AND NO EXPRESS REPRESENTATION IS MADE NOR IS ANY TO BE IMPLIED AS TO THE ACCURACY THEREOF, AND IT IS SUBMITTED SUBJECT TO ERRORS, OMISSIONS, CHANGE OF PRICE, RENTAL OR OTHER CONDITIONS, PRIOR SALE, LEASE OR FINANCING, OR WITHDRAWAL WITHOUT NOTICE.

