

# 1/2 BOND STREET

AKA 666 Broadway | New York, NY 10012 | BOND STREET - BETWEEN BROADWAY & LAFAYETTE



LOWER LEVEL  
SPACE FOR LEASE



# 1/2 BOND STREET

AKA 666 BROADWAY

BETWEEN BROADWAY AND LAFAYETTE

NOHO | New York, NY 10012

## Lower Level

6,000 SF

## Ceiling Heights

12 Feet

## POSSESSION

Immediate

## COMMENTS

- Prime NoHo location - in a vibrant, high-traffic neighborhood
- Versatile 6,000 SF - Ideal for fitness, creative, or experiential uses
- Exclusive lower-level - offers privacy and value in a premier district
- Customizable layout - ready for your business vision
- Excellent transit access - steps from major subway lines: **B D F M 6 R W N Q**

## NEIGHBORS

ZERO·BOND

EQUINOX



BONDST



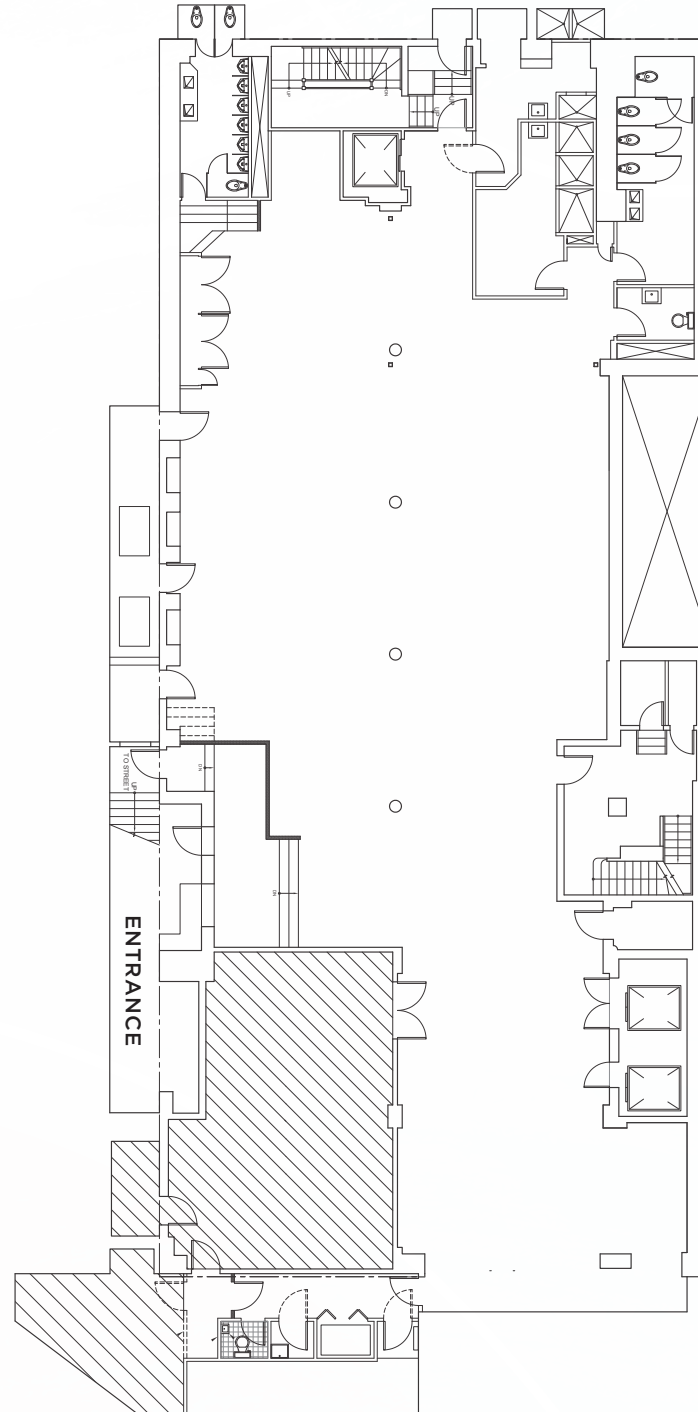
NEW YORK UNIVERSITY

corepower  
YOGA

KITH

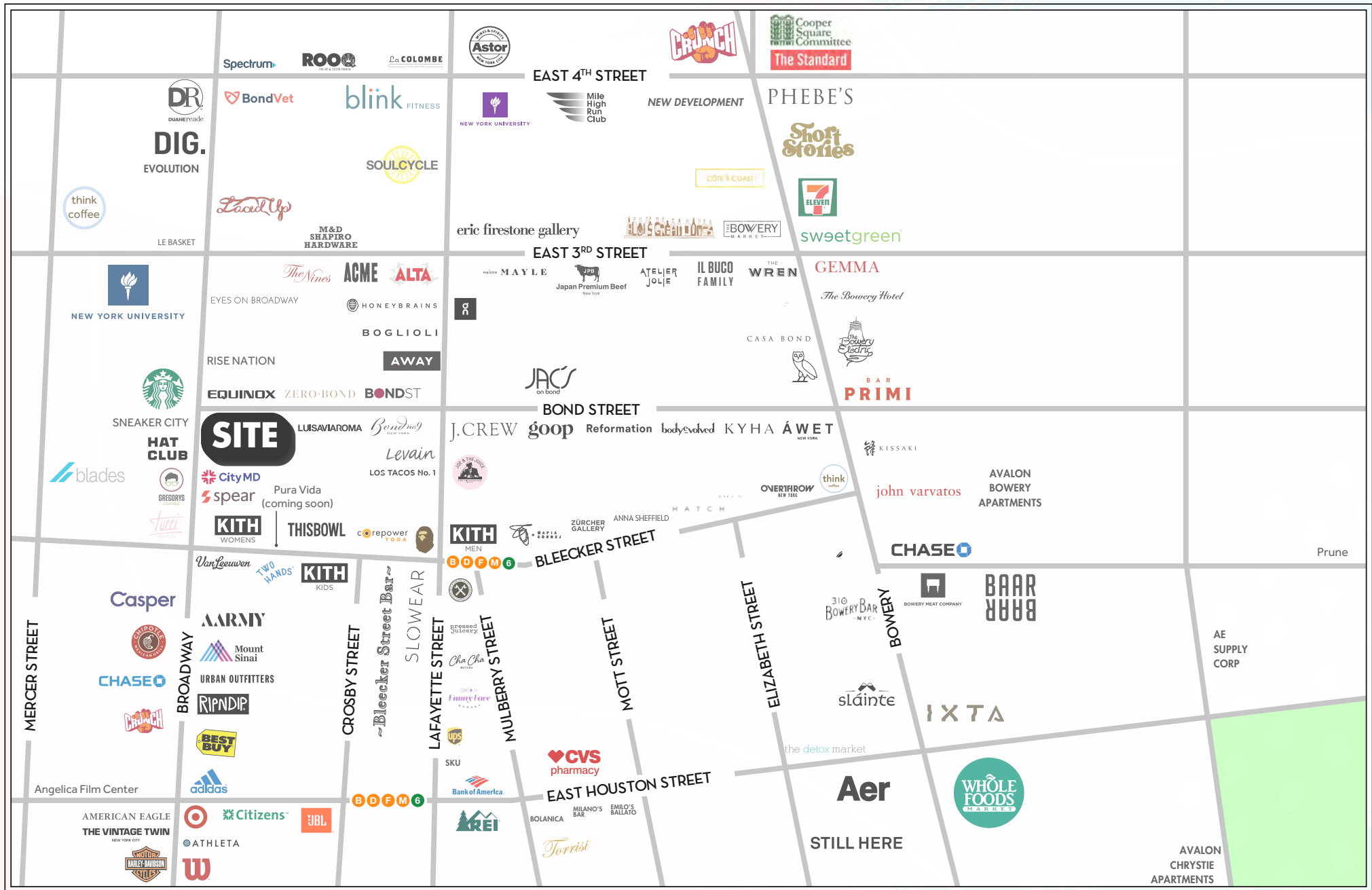


BOND STREET



ENTRANCE

BROADWAY



**WINICK  
REALTY  
GROUP**

Winick Realty Group LLC, Licensed Real Estate Brokers  
655 Third Avenue, 24th Floor | New York, NY 10017  
T 212.792.2600 | F 212.792.2660 | winick.com

ALTHOUGH ALL INFORMATION REGARDING PROPERTY FOR SALE, RENTAL OR FINANCING IS FROM SOURCES DEEMED RELIABLE SUCH INFORMATION HAS NOT BEEN VERIFIED, AND NO EXPRESS REPRESENTATION IS MADE NOR IS ANY TO BE IMPLIED AS TO THE ACCURACY THEREOF, AND IT IS SUBMITTED SUBJECT TO ERRORS, OMISSIONS, CHANGE OF PRICE, RENTAL OR OTHER CONDITIONS, PRIOR SALE, LEASE OR FINANCING, OR WITHDRAWAL WITHOUT NOTICE.

For more information, please contact our exclusive brokers:

**Hal Shapiro**

212.792.2623

hal@winick.com

**Alex Karas**

212.792.2656

akaras@winick.com