

RETAIL

622 ELEVENTH AVENUE

BETWEEN WEST 45TH & 46TH STREETS

HELLS KITCHEN | NEW YORK, NY 10036



ret

RETAIL

622 ELEVENTH AVENUE

BETWEEN WEST 45TH AND 46TH STREETS
HELLS KITCHEN | NEW YORK, NY 10036

Retail Premises

Ground Floor	Lower Level	Frontage
280 SF	2,090 SF	66 FT

Ceiling Height

20 FT

Possession

Q4 2025

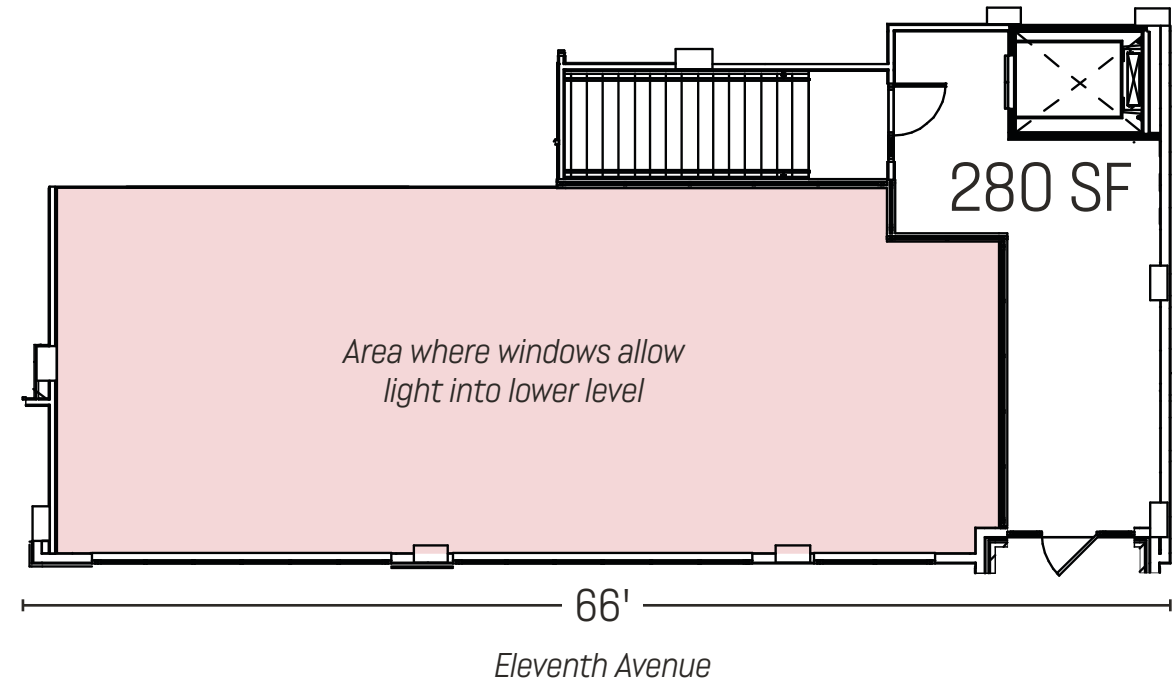
Property Details

- Brand new construction - modern, efficient design with state-of-the-art Infrastructure
- High ceilings and wide frontage - great branding and signage opportunities
- New HVAC and elevator (dedicated to this space only)

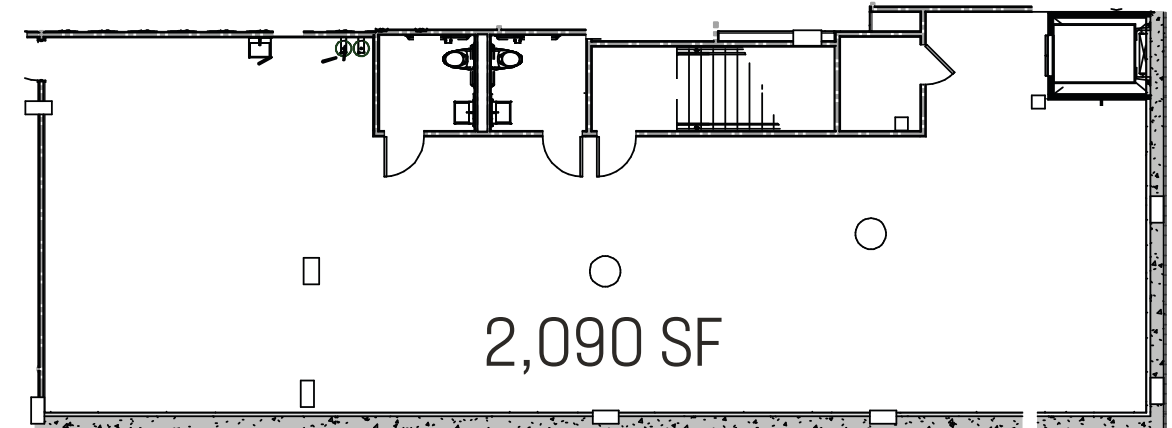
Neighbors

Starbucks, Landmark Tavern, Era Rooftop Bar, Silver Towers, Sunrise Marketplace, Grand Cru Wine & Spirits, Sullivan Street Bakery, Bread and Breakfast Burritos

Ground Floor



Lower Level



RETAIL

622 ELEVENTH AVENUE

BETWEEN WEST 45TH & 46TH STREETS
HELLS KITCHEN | NEW YORK, NY 10036

FOR MORE INFORMATION, PLEASE CONTACT OUR EXCLUSIVE AGENTS

HAL SHAPIRO

(212) 792-2623

hal@rtl-re.com

MATT KNISPEL

(212) 792-2609

mknispel@rtl-re.com



RTL Partners LLC, Licensed Real Estate Brokers

655 Third Avenue, 24th Floor | New York, NY 10017 | Tel: 212.792.2600 | Fax: 212.792.2660 | www.rtl-re.com

ALTHOUGH ALL INFORMATION REGARDING PROPERTY FOR SALE, RENTAL OR FINANCING IS FROM SOURCES DEEMED RELIABLE SUCH INFORMATION HAS NOT BEEN VERIFIED, AND NO EXPRESS REPRESENTATION IS MADE NOR IS ANY TO BE IMPLIED AS TO THE ACCURACY THEREOF, AND IT IS SUBMITTED SUBJECT TO ERRORS, OMISSIONS, CHANGE OF PRICE, RENTAL OR OTHER CONDITIONS, PRIOR SALE, LEASE OR FINANCING, OR WITHDRAWAL WITHOUT NOTICE.