

# 405 West 14<sup>th</sup> Street

Meatpacking District

North Side of West 14th Street between 9<sup>th</sup> Avenue & Washington Street  
New York, New York 10014



# ▶ THE DETAILS

## ▶ Size (approximately)

Ground Floor	2,605 SF
Second Floor	2,500 SF
Lower Level	1,050 SF

## ▶ Frontage

25 FT on West 14th Street

## ▶ Possession

Immediate

## ▶ Nearby Public Transit

**A C E L 1 2 3**

## ▶ Comments

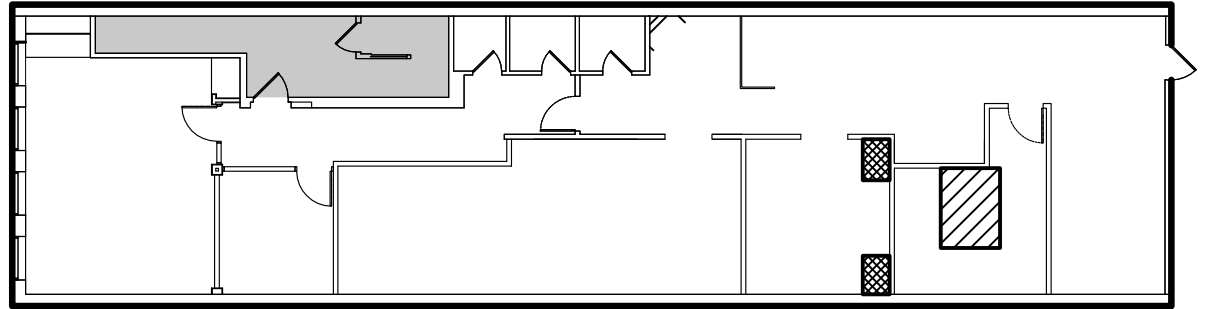
- Formerly The Ugg Store
- Turn-key retail with exposed brick
- Situated in a prime location in the Meatpacking District close to Chelsea Market, The High Line & The Little Island

## ▶ Neighbors

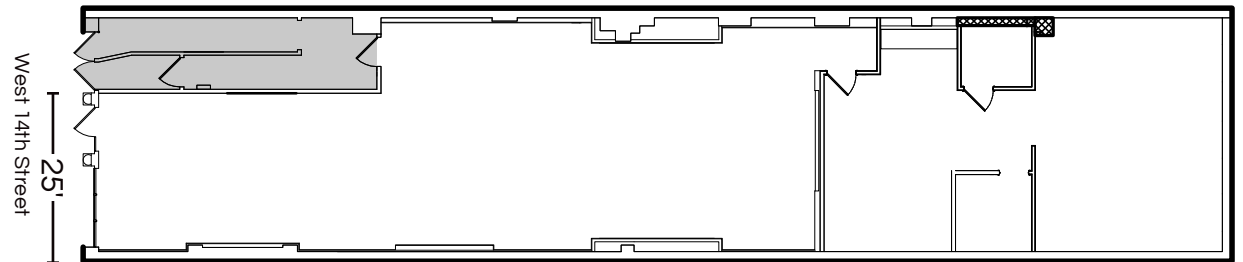
Apple, Gucci, Sephora, Lululemon, Tesla, Hermes, Soho House, Breitling, Rolex, Rag & Bone, Belstaff, Fjallraven, Catch, Starbucks Roastery, Herman Miller, Fisker

# ▶ THE SPACE

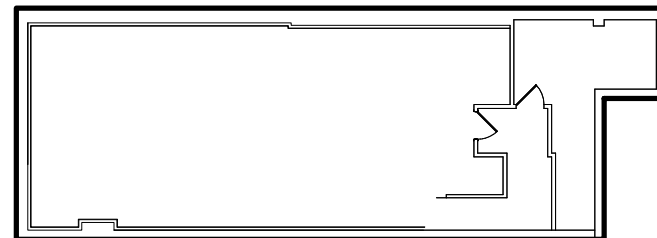
Second Floor  
2,500 SF



Ground Floor  
2,605 SF



Lower Level  
1,050 SF



# ▶ THE INTERIOR



Ground Floor



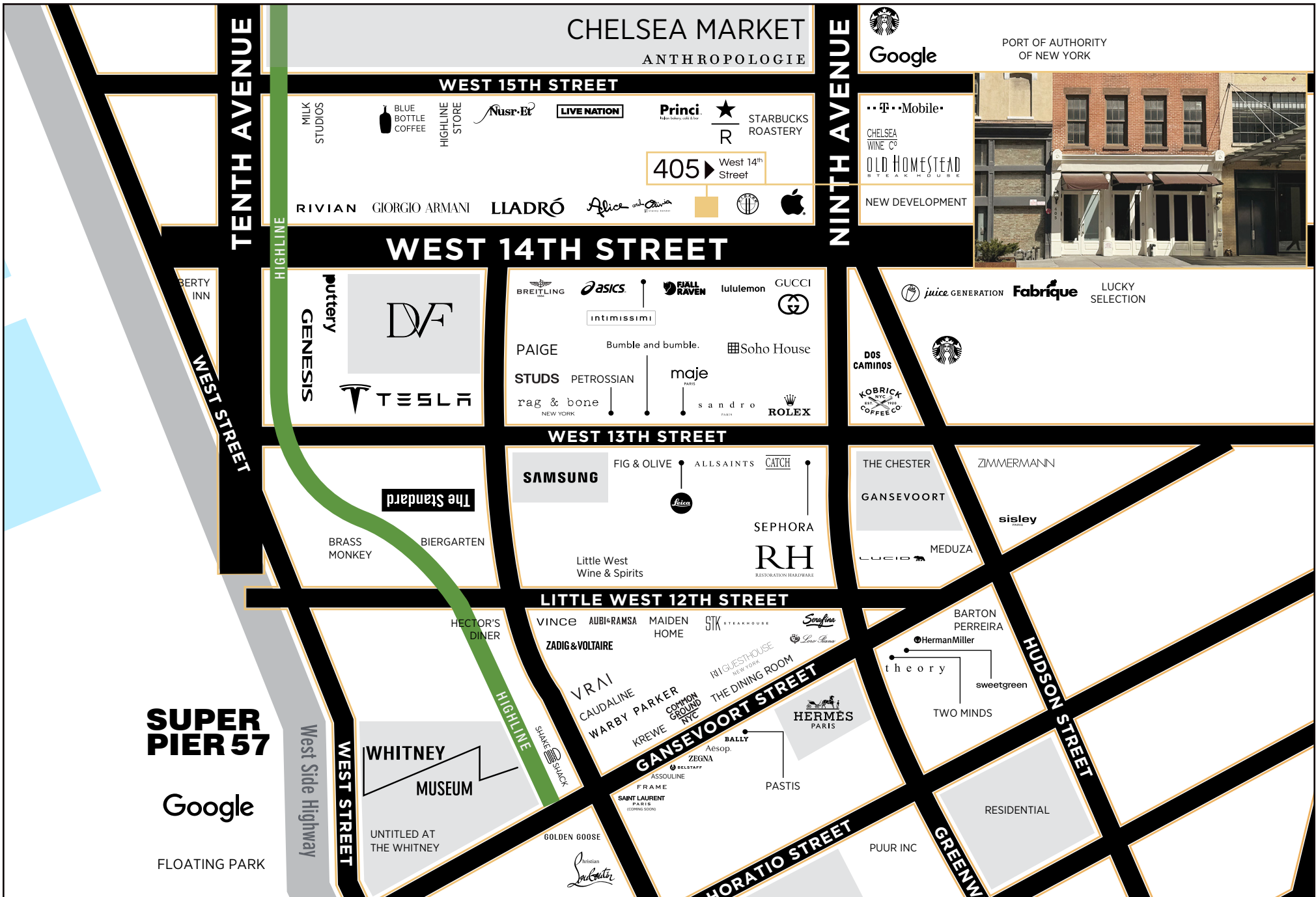
Ground Floor



Second Floor



Lower Level



RTL Partners LLC, Licensed Real Estate Brokers  
655 Third Avenue, 24th Floor | New York, NY 10017  
T 212.792.2600 | F 212.792.2660 | rtl-re.com

ALTHOUGH ALL INFORMATION REGARDING PROPERTY FOR SALE, RENTAL OR FINANCING IS FROM SOURCES DEEMED RELIABLE SUCH INFORMATION HAS NOT BEEN VERIFIED, AND NO EXPRESS REPRESENTATION IS MADE NOR IS ANY TO BE IMPLIED AS TO THE ACCURACY THEREOF, AND IT IS SUBMITTED SUBJECT TO ERRORS, OMISSIONS, CHANGE OF PRICE, RENTAL OR OTHER CONDITIONS, PRIOR SALE, LEASE OR FINANCING, OR WITHDRAWAL WITHOUT NOTICE

Please contact our exclusive agent:

Lee Block  
212.792.2649  
lee@rtl-re.com