

FLATIRON DISTRICT

31

EAST 20TH STREET

BTWN BROADWAY & PARK AVE SOUTH
NEW YORK, NY 10003



31 EAST 20TH STREET

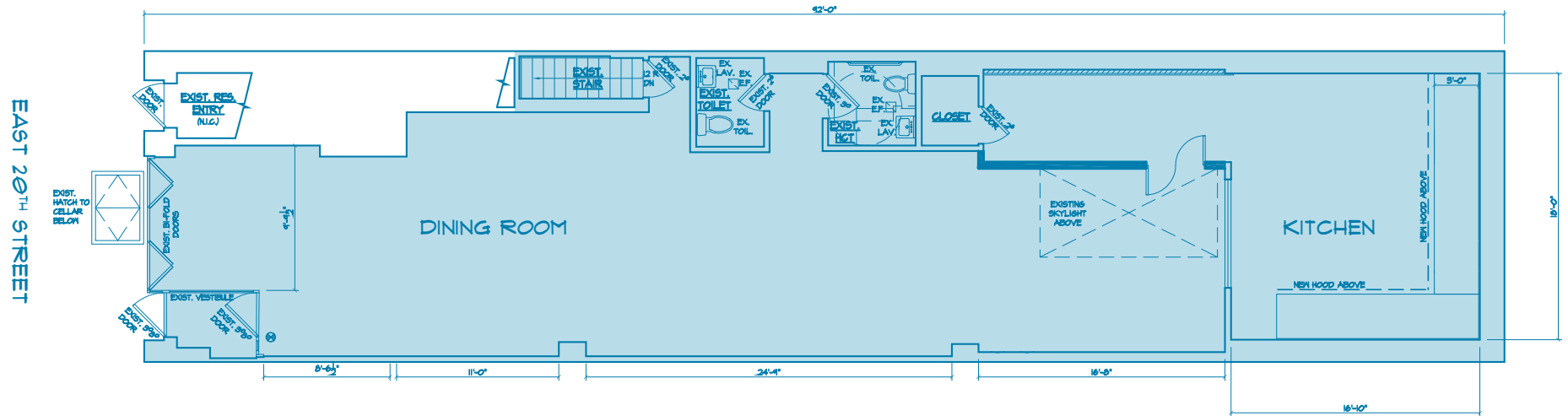
GROUND FLOOR
1,800 SF*
*approximate

BASEMENT
1,000 FT*

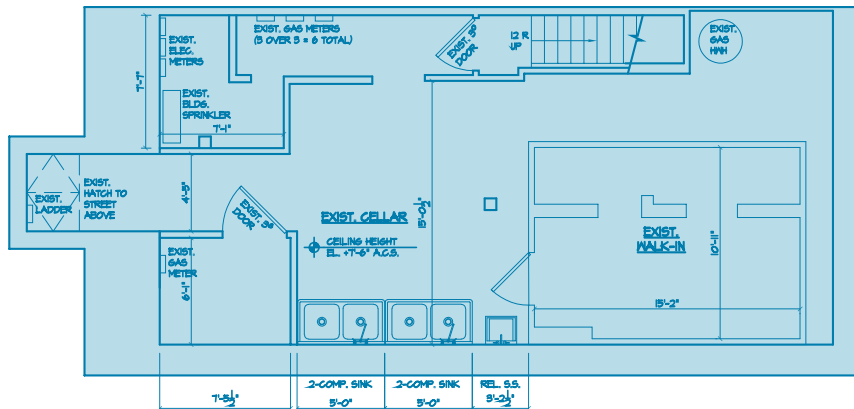
FRONTAGE
20 FT

POSSESSION
Immediate

GROUND FLOOR



BASEMENT



HIGHLIGHTS

Fully vented and built out restaurant space

Located on the best restaurant street in Flatiron, Manhattan

Recent renovation work includes new upgraded utilities, bathrooms, ventilation & HVAC

NEIGHBORS

Sugarfish, Rezdora, Devocion, Mari Vanna, Gramercy Tavern, Mezeh, L'Express, Barbounia



FIFTH AVENUE

31 EAST 20TH STREET

BTWN BROADWAY & PARK AVE SOUTH
NEW YORK, NY 10003

For more information, please contact our exclusive agents:

Lee Block
212-792-2649
lee@winick.com

WRG | WINICK
REALTY
GROUP

Winick Realty Group LLC, Licensed Real Estate Brokers
655 Third Avenue, 24th Floor | New York, NY 10017 T 212.792.2600 | F 212.792.2660 | winick.com

ALTHOUGH ALL INFORMATION REGARDING PROPERTY FOR SALE, RENTAL OR FINANCING IS FROM SOURCES DEEMED RELIABLE SUCH INFORMATION HAS NOT BEEN VERIFIED, AND NO EXPRESS REPRESENTATION IS MADE NOR IS ANY TO BE IMPLIED AS TO THE ACCURACY THEREOF, AND IT IS SUBMITTED SUBJECT TO ERRORS, OMISSIONS, CHANGE OF PRICE, RENTAL OR OTHER CONDITIONS, PRIOR SALE, LEASE OR FINANCING, OR WITHDRAWAL WITHOUT NOTICE

