

2770 BROADWAY

NEW YORK - 10025



NEW YORK
RETAIL

2770 BROADWAY

UPPER WEST SIDE | NEW YORK - 10025

OFF THE CORNER OF 107TH STREET

AVAILABILITY

GROUND FLOOR

3,000 SF

LOWER LEVEL

2,059 SF

FRONTAGE

40 FT

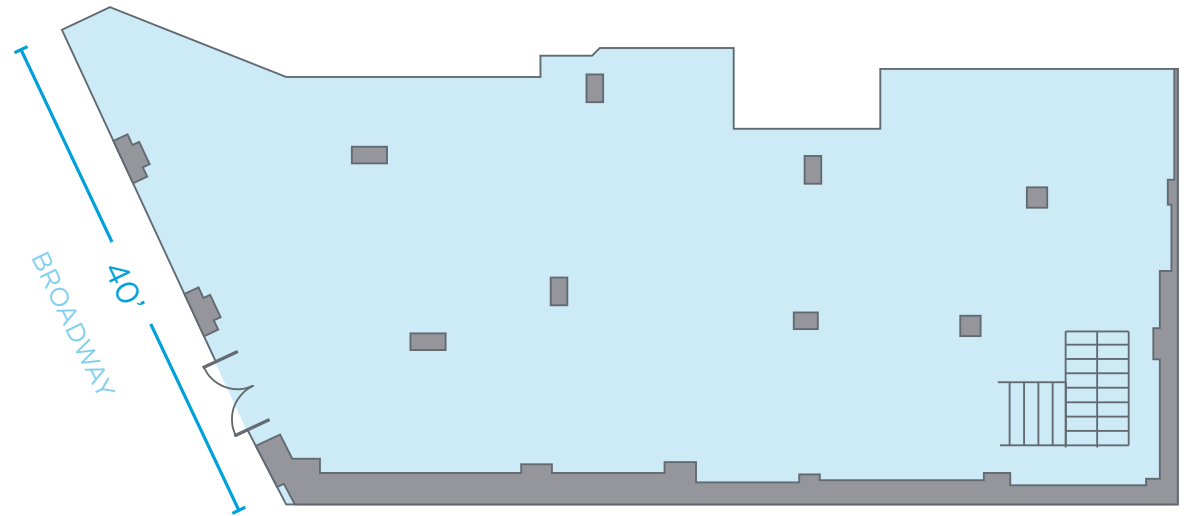
COMMENTS

- Open layout with high ceilings, selling lower level
- Prominent location in heart of Upper West Side
- Steps from Columbia University & 1 Subway Station

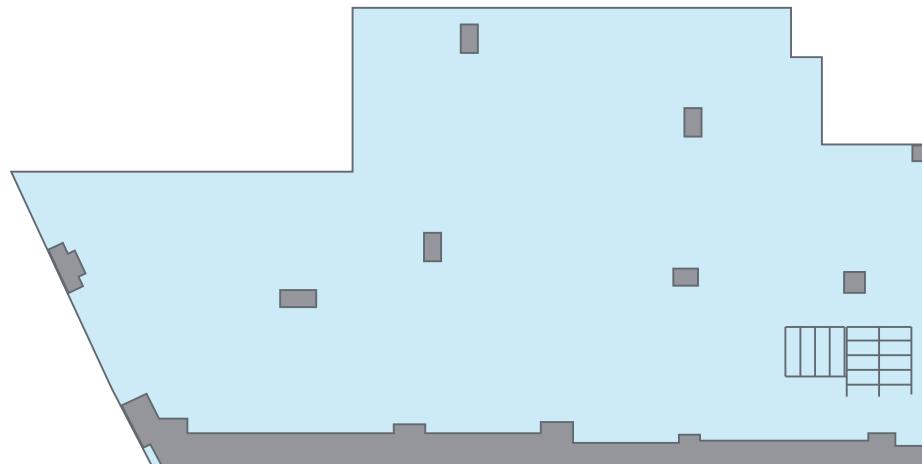
NEIGHBORS

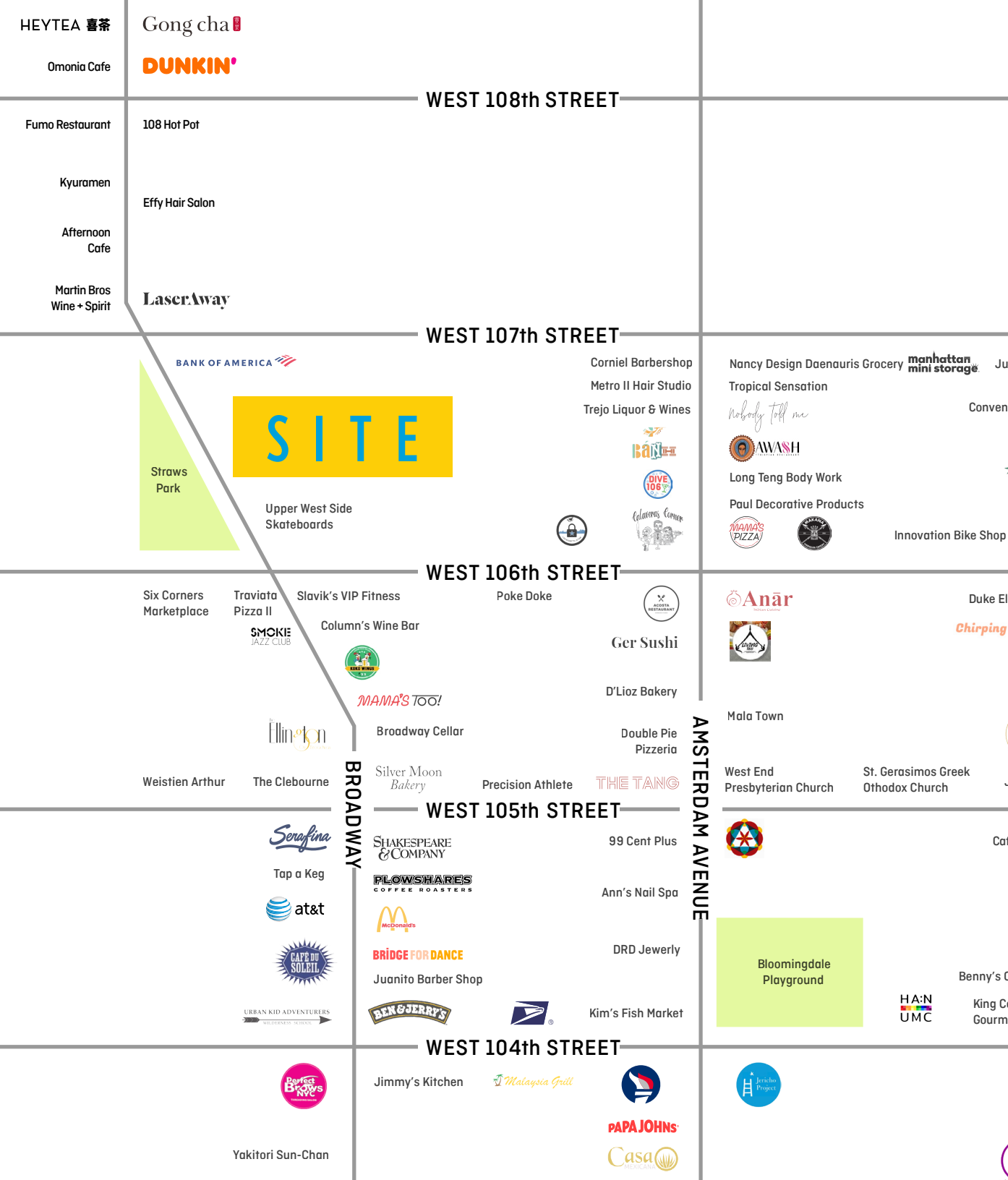
Bank of America, Laser Away, Mama's Too, H Mart, TD Bank, Chase Bank, Shakespeare & Co, Silver Moon Bakery

GROUND FLOOR



LOWER LEVEL





For more information, please contact our exclusive agents:

JEFF WINICK
212-792-2601
jeff@rtl-re.com

LEE BLOCK
212-792-2649
lee@rtl-re.com



RTL Partners LLC, Licensed Real Estate Brokers
655 Third Avenue, 24th Floor | New York, NY 10017
T 212.792.2600 | F 212.792.2660 | rtl-re.com



ALTHOUGH ALL INFORMATION REGARDING PROPERTY FOR SALE, RENTAL OR FINANCING IS FROM SOURCES DEEMED RELIABLE SUCH INFORMATION HAS NOT BEEN VERIFIED, AND NO EXPRESS REPRESENTATION IS MADE NOR IS ANY TO BE IMPLIED AS TO THE ACCURACY THEREOF, AND IT IS SUBMITTED SUBJECT TO ERRORS, OMISSIONS, CHANGE OF PRICE, RENTAL OR OTHER CONDITIONS, PRIOR SALE, LEASE OR FINANCING, OR WITHDRAWAL WITHOUT NOTICE