

22 SPRING STREET RETAIL FOR NoLITA

LEASE

NEW YORK
NY 10012



22 SPRING STREET

NEW YORK, NY 10012

| Between Mott and Elizabeth Streets |

SIZE

Ground Floor 800 Square Feet

Basement 500 Square Feet

FRONTAGE

12 Feet

COMMENTS

- Boutique space in the heart of Nolita
- Exposed brick walls with 12' Ceilings
- All Uses Considered, Food OK

NEIGHBORS

Mejuri, Wayan, Boba Guys, Jono Pandolfi USA, Soft Side, Upside Pizza, Vuarnet, Bondi Sushi, M Jewels, 3sixteen, Supreme, Hit House, Aime Leon Dore, Thai Diner, Bag-all, Garrett Leight

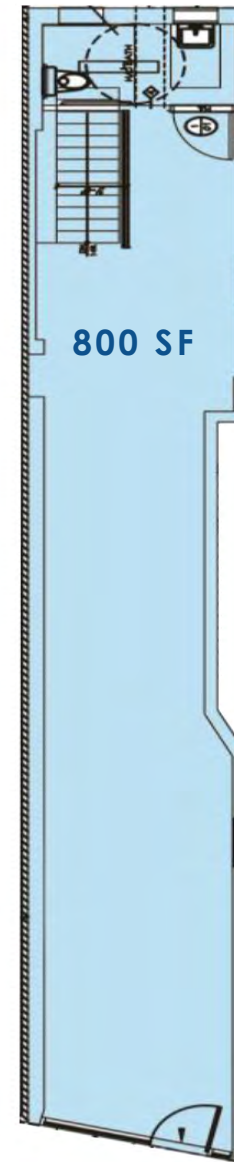


**WINICK
REALTY
GROUP**

Winick Realty Group LLC, Licensed Real Estate Brokers
655 Third Avenue, 24th Floor | New York, NY 10017
T 212.792.2600 | F 212.792.2660 | winick.com

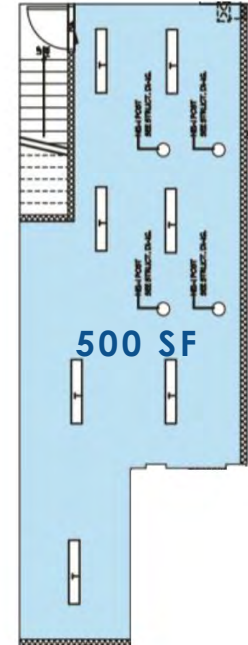
ALTHOUGH ALL INFORMATION REGARDING PROPERTY FOR SALE, RENTAL OR FINANCING IS FROM SOURCES DEEMED RELIABLE SUCH INFORMATION HAS NOT BEEN VERIFIED, AND NO EXPRESS REPRESENTATION IS MADE NOR IS ANY TO BE IMPLIED AS TO THE ACCURACY THEREOF, AND IT IS SUBMITTED SUBJECT TO ERRORS, OMISSIONS, CHANGE OF PRICE, RENTAL OR OTHER CONDITIONS, PRIOR SALE, LEASE OR FINANCING, OR WITHDRAWAL WITHOUT NOTICE

Ground Floor



Spring Street

Basement



For more information, please contact our exclusive agent:

Lee Block

212.792.2649

lee@winick.com