

# 163 WEST 23RD STREET

BETWEEN SIXTH AND SEVENTH AVENUES | NEW YORK, NY 10011 | CHELSEA

# SIGNAGE

163

FDC

rtl

# 163 WEST 23RD STREET

BETWEEN SIXTH AND SEVENTH AVENUES  
NEW YORK, NY 10011 | CHELSEA

## PREMISES (approx.)

Ground Floor .....2,400 SF  
Basement .....2,000 SF


## POSSESSION

Immediate

## ASKING RENT

Upon Request

## COMMENTS

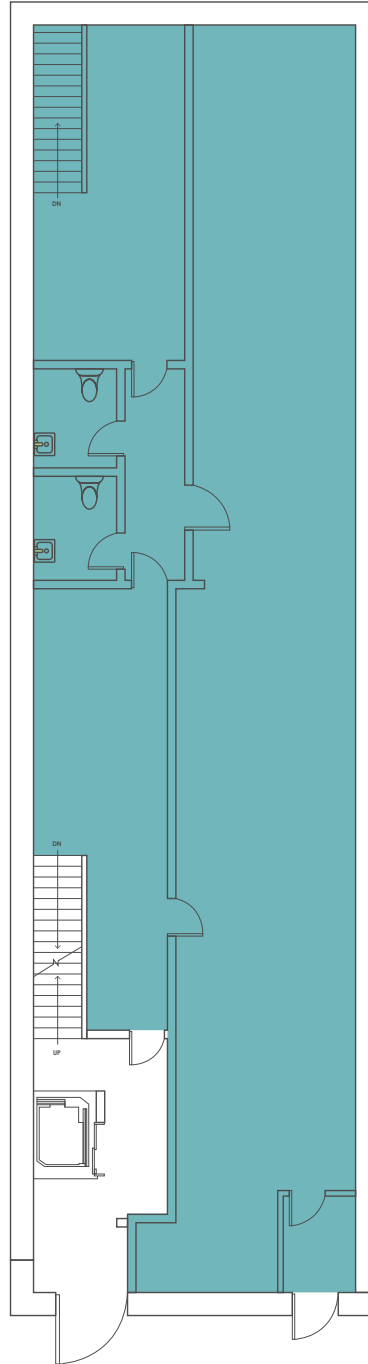
- Column-free, vented restaurant space
- Steps from the 23rd Street  train station
- All uses considered

## NEIGHBORING TENANTS

Solidcore, Rumble Boxing, Westside Market,  
7th Street Burger, TD Bank, Wonder, Cotti  
Coffee, Satori Laser

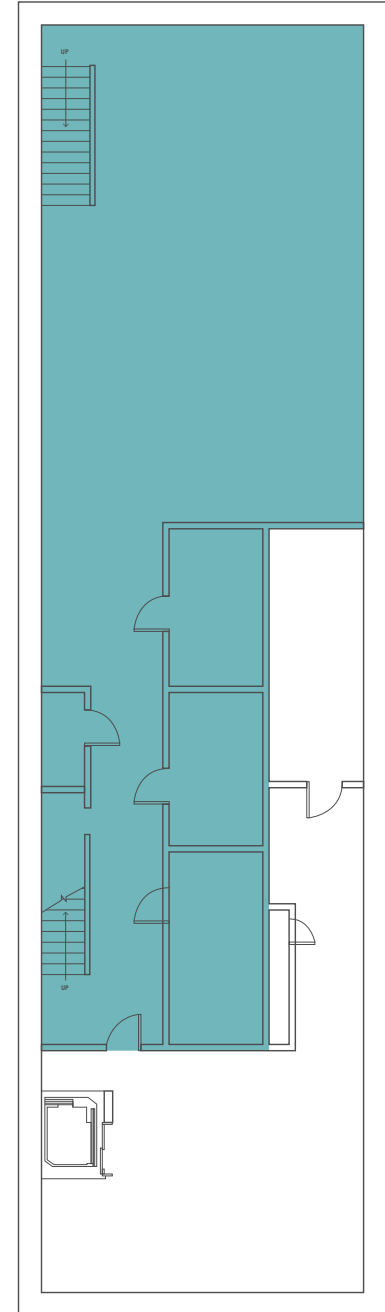
## Ground Floor

2,400 SF



## Basement

2,000 SF



WEST 23RD STREET

# 163 WEST 23RD STREET

BETWEEN SIXTH AND SEVENTH AVENUES  
NEW YORK, NY 10011 | CHELSEA

WEST 25TH STREET

WEST 24TH STREET

WEST 23RD STREET

WEST 22ND STREET

WEST 21ST STREET

SIXTH AVENUE

SEVENTH AVENUE

163

buybuy BABY  
BLANK STREET

WHOLE FOODS MARKET

VARIETY COFFEE  
Hampton  
The Chelsean NEW YORK HOTEL  
BARKHOUSE  
SMITHFIELD  
HOT 8 YOGA  
RENAISSANCE<sup>®</sup> NEW YORK CHELSEA HOTEL  
2 BROS PIZZA  
Oasis Nails & Spa  
Professional Nail Salon  
VEG

FedEx Kinko's  
Office and Print Center  
Starbucks  
CHLSEA PAPAYA  
7-STREET BURGER  
[solidcore]  
mOTTO by Hilton<sup>®</sup>  
DUNKIN'<sup>®</sup>  
ups  
citi<sup>™</sup> Citibank

verizon  
BLICK<sup>®</sup> art materials  
at&t  
U David Barton  
TACO BELL

POPEYES LOUISIANA KITCHEN  
NORTH EAST COMMUNITY BANK  
HOTEL CHELSEA Units: 250  
CAFÉ CHELSEA  
GOTHAM CREDIT CLUB  
TD

Cotti  
Bibi's  
Janovic The Color Authority  
SUBWAY<sup>®</sup>  
NAILS & SPA  
vivi BUBBLE TEA  
Domino's Pizza  
WY WY MARKET EST. 1985  
RUMBLE  
SATORI LASER  
STRETCH LAB  
Wonder  
Mensa Szechuan Kitchen  
Burlington  
bluemercury<sup>™</sup> makeup • skincare • spa

Krave Bros Hardware  
D is for Doggy  
CASA Organic Dry Cleaners  
IRISH REPERTORY THEATRE  
JoeCoffee  
NY CAKE  
SHERWIN-WILLIAMS  
Michael's  
DXL BIG + TALL  
TRADER JOE'S

ZaZū MEDITERRANEAN STREET FOOD  
crumbl

WEST 25TH STREET

WEST 24TH STREET

WEST 23RD STREET

WEST 22ND STREET

WEST 21ST STREET



RTL Partners LLC, Licensed Real Estate Brokers  
655 Third Avenue, 24th Floor | New York, NY 10017  
T 212.792.2600 | F 212.792.2660 | rtl-re.com

ALTHOUGH ALL INFORMATION REGARDING PROPERTY FOR SALE, RENTAL OR FINANCING IS FROM SOURCES DEEMED RELIABLE SUCH INFORMATION HAS NOT BEEN VERIFIED, AND NO EXPRESS REPRESENTATION IS MADE NOR IS ANY TO BE IMPLIED AS TO THE ACCURACY THEREOF, AND IT IS SUBMITTED SUBJECT TO ERRORS, OMISSIONS, CHANGE OF PRICE, RENTAL OR OTHER CONDITIONS, PRIOR SALE, LEASE OR FINANCING, OR WITHDRAWAL WITHOUT NOTICE

For more information, please contact our exclusive brokers:

**Lee Block**

212.792.2649

lee@rtl-re.com

**Jackson Wohl**

212.792.2608

jwohl@rtl-re.com