

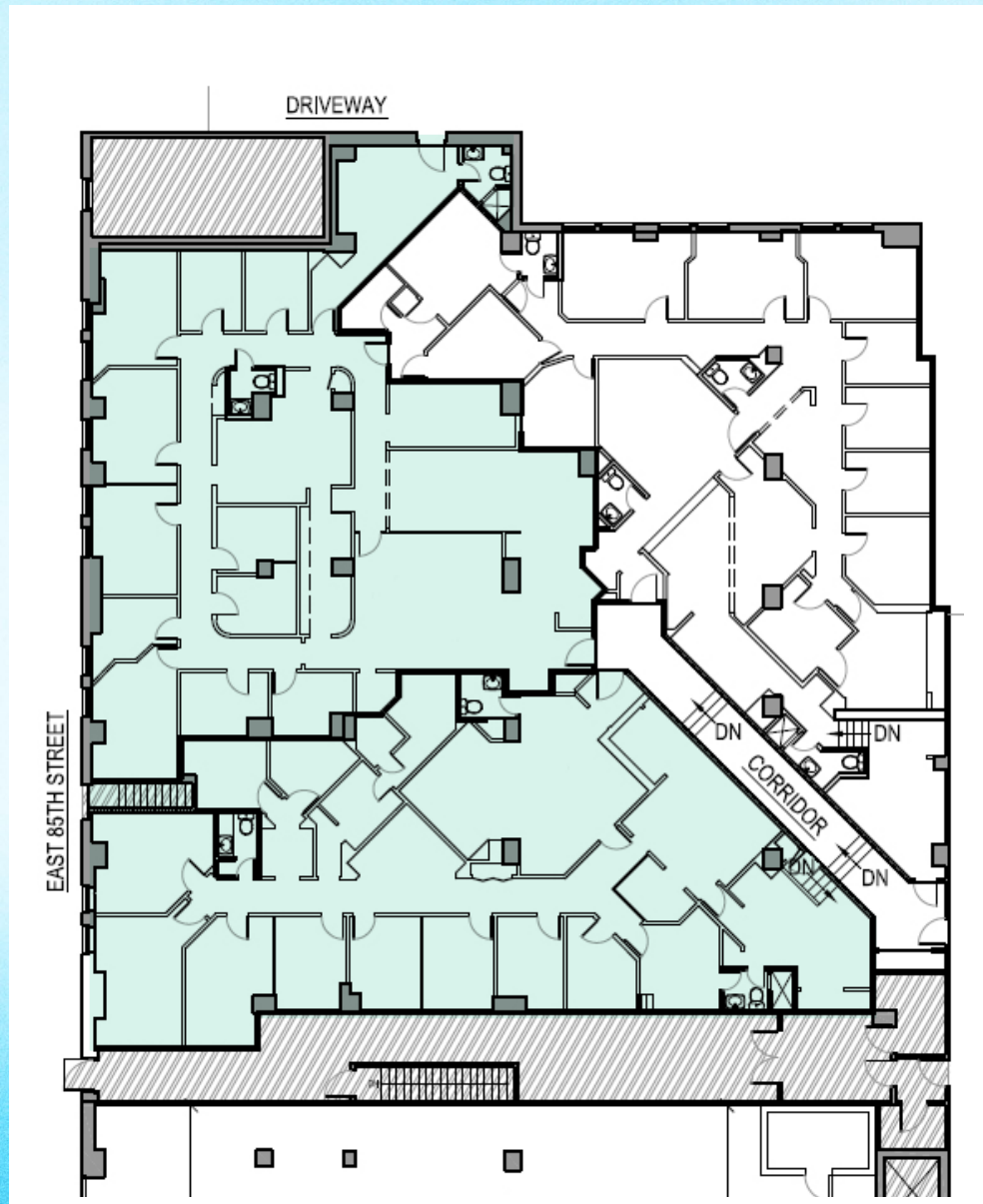
UPPER EAST SIDE | NEW YORK, NY 10028

# 12 EAST 86TH ST / MEDICAL SPACE



# 12 EAST 86TH ST

BETWEEN MADISON & FIFTH AVENUES | NEW YORK, NY 10028



GROUND FLOOR

5,000 sq ft

CEILING HEIGHT

12 ft

FRONTAGE

75 ft

POSSESSION

Arranged

TERM

Long Term

ASKING RENT

Upon Request

## KEY NOTES

Built-out medical space

Strong visibility with clear branding potential

Convenient access to transit and amenities

Well-positioned within an established medical corridor

Located within an active mixed-use neighborhood

Steps from Central Park

Walking distance from Lenox Hill Hospital & Mount Sinai Hospital



The Metropolitan  
Museum of Art

5TH AVENUE

 <b>Guggenheim Museum</b> <b>babycottons</b> <b>BLANK STREET</b>
<b>BLUEMERCURY</b> <b>PINK CHICKEN</b> Blue & Cream Unsubscribed
 <b>ALEX MILL</b> <i>Brooks Brothers</i>
    Varley Roller Rabbit BUTTERFIELD MARKET
James Perse  <b>ASTRID &amp; MIYU</b>
Little Eric  <b>Madison Apothecary</b>
   <b>Hastens</b>
 <b>SUSAN ALEXANDRA</b> jenni kayne <b>YIGAL AZROUËL</b>

MADISON AVENUE

<b>ROBERT MARC</b> Madison Fare New York Rylee & Cru
<b>TOAST</b> MADISON AVENUE WINE SHOP 
Park Avenue Synagogue <b>FAHERTY</b>
<b>SWAROVSKI</b> <b>TODD SNYDER</b> NEW YORK <b>VUORI</b> JENNIFER FISHER
 Favorite Daughter  
<b>TUCKERNUCK</b> Eddie Plishti Salon CAMI NYC
Schweitzer Linen Kimara Anbert <b>MEPHISTO</b> <b>OVANDO</b>
Lillie D. Blake School

PARK AVENUE

E 88TH ST

E 87TH ST

E 86TH ST

E 85TH ST

E 84TH ST

E 83RD ST

E 82ND ST

E 81ST ST

# 12 EAST 86TH ST

BETWEEN MADISON & FIFTH AVENUES | NEW YORK, NY 10028

FOR MORE INFO,  
CONTACT OUR EXCLUSIVE AGENTS

Steven E. Baker  
(212) 792-2636  
stevenb@rtl-re.com

Charles Rapuano  
(212) 792-2658  
charles@rtl-re.com

Matthew Knispel  
(212) 792-2609  
mknispel@rtl-re.com



RTL Partners LLC, Licensed Real Estate Brokers  
655 Third Avenue, 24th Floor | New York, NY 10017  
TEL: (212)-792-2600 | WEB: rtl-re.com

ALTHOUGH ALL INFORMATION REGARDING PROPERTY FOR SALE, RENTAL OR FINANCING IS FROM SOURCES DEEMED RELIABLE SUCH INFORMATION HAS NOT BEEN VERIFIED, AND NO EXPRESS REPRESENTATION IS MADE NOR IS ANY TO BE IMPLIED AS TO THE ACCURACY THEREOF, AND IT IS SUBMITTED SUBJECT TO ERRORS, OMISSIONS, CHANGE OF PRICE, RENTAL OR OTHER CONDITIONS, PRIOR SALE, LEASE OR FINANCING, OR WITHDRAWAL WITHOUT NOTICE.